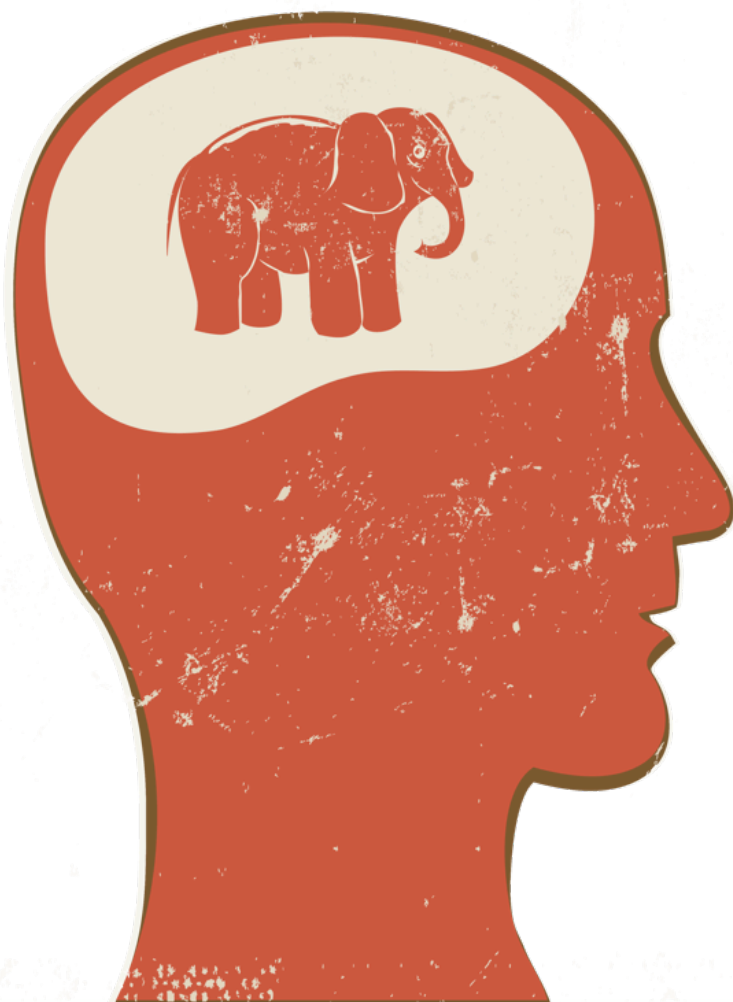




CENTER FOR THE STUDY OF
ELECTIONS AND DEMOCRACY
BRIGHAM YOUNG UNIVERSITY

The State of Politics in Utah

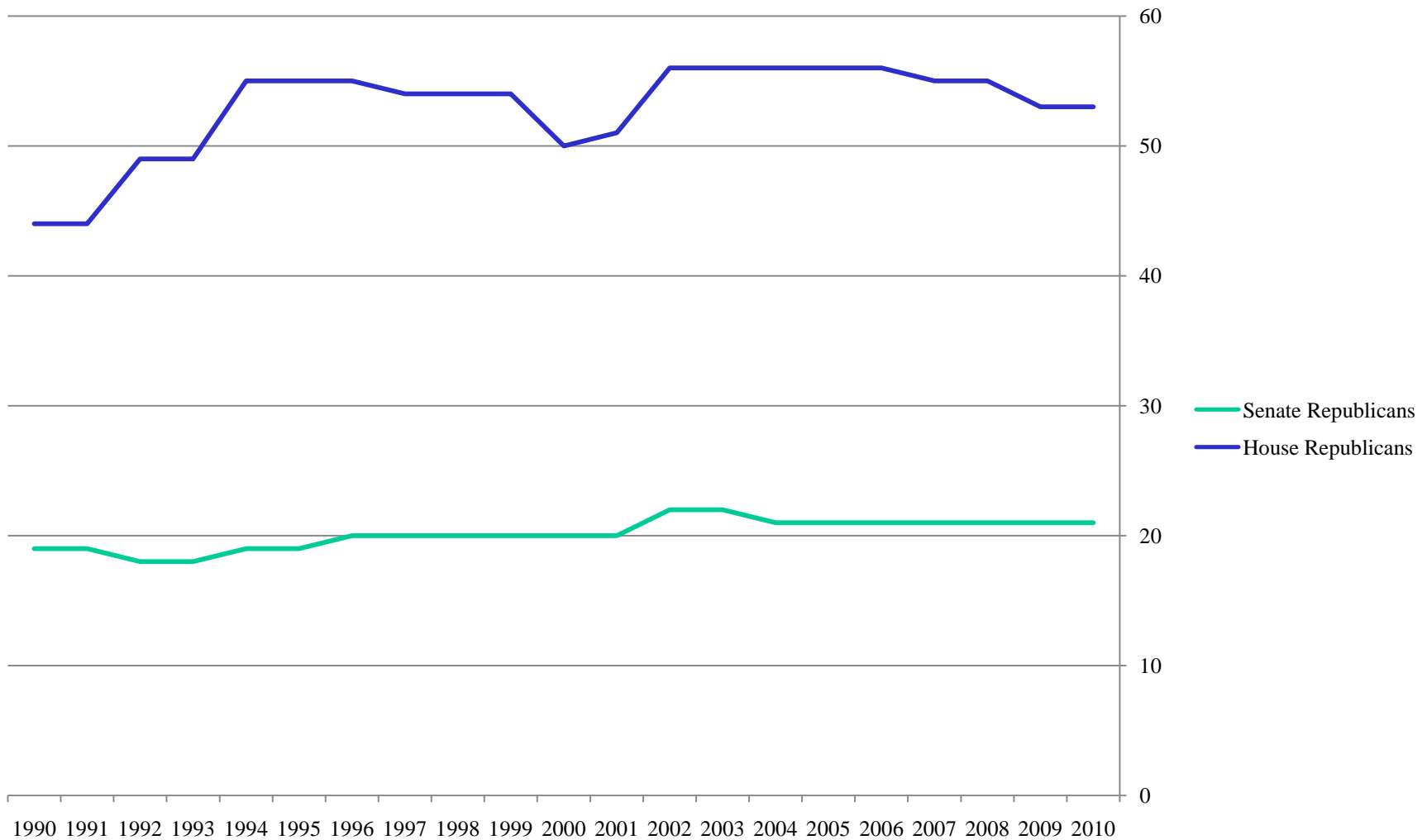


Republicans in Utah House and Senate



CENTER FOR THE STUDY OF
ELECTIONS AND DEMOCRACY

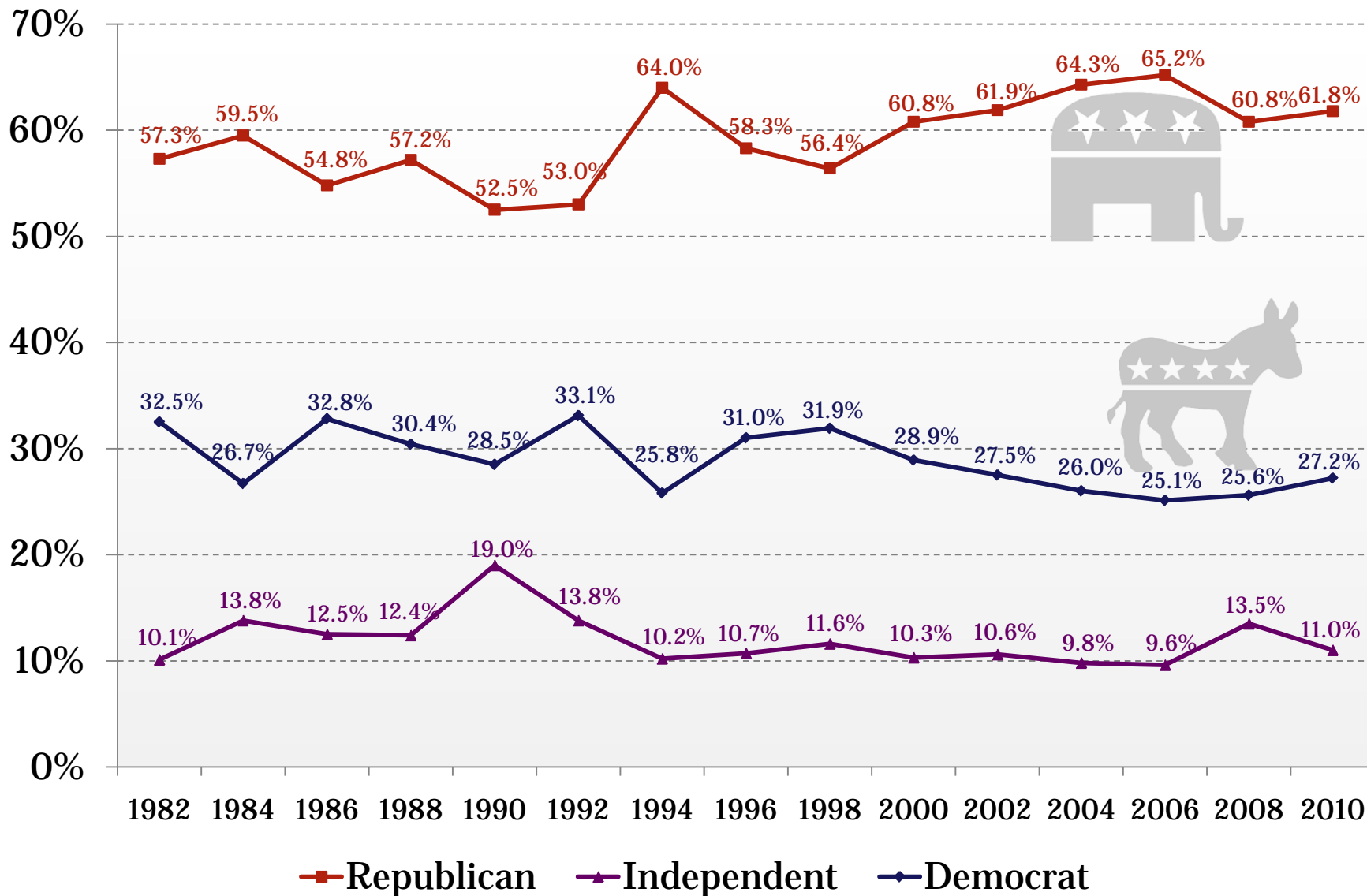
BRIGHAM YOUNG UNIVERSITY



Utah Party Identification Over Time



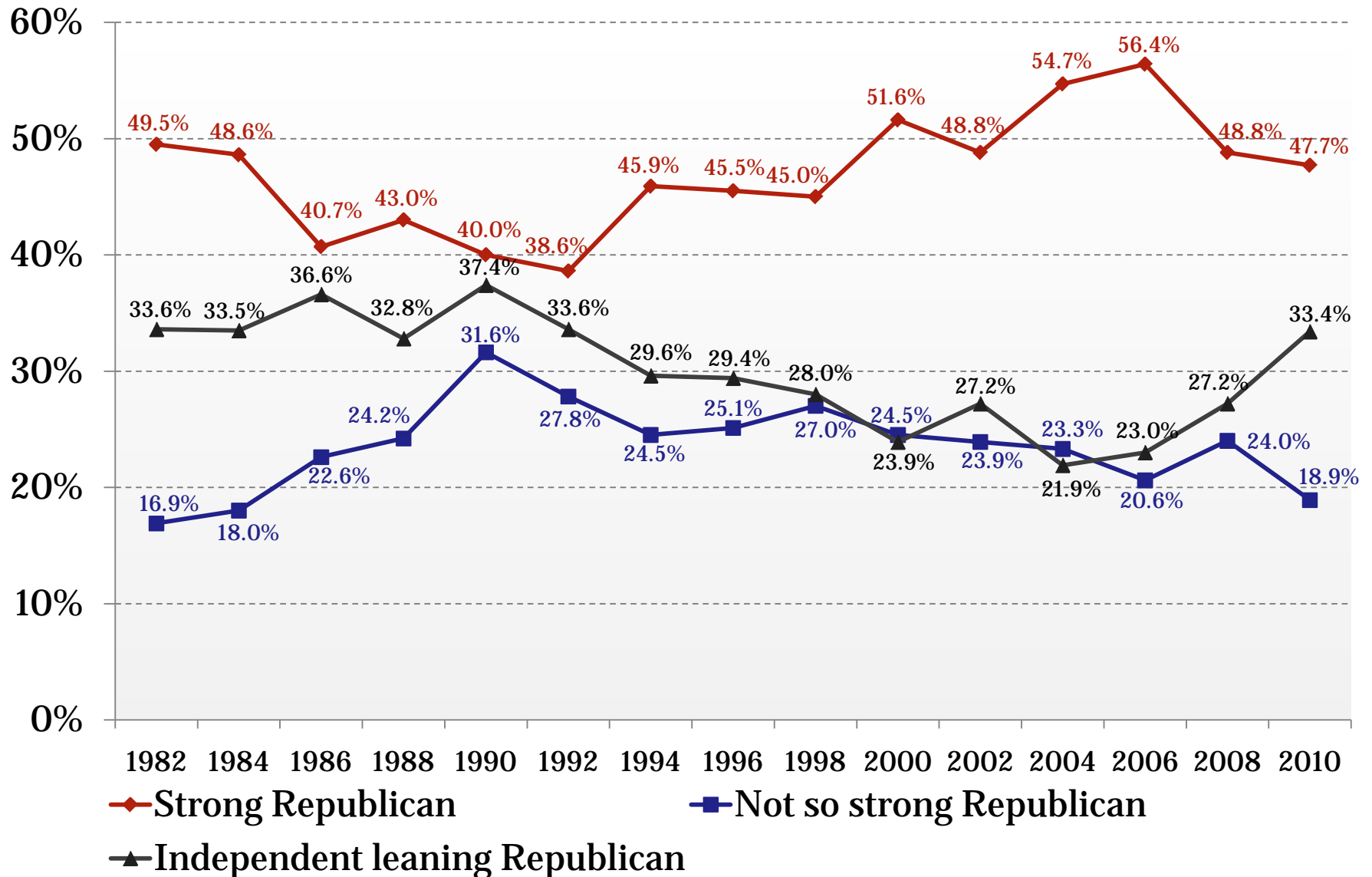
CENTER FOR THE STUDY OF
ELECTIONS AND DEMOCRACY
BRIGHAM YOUNG UNIVERSITY



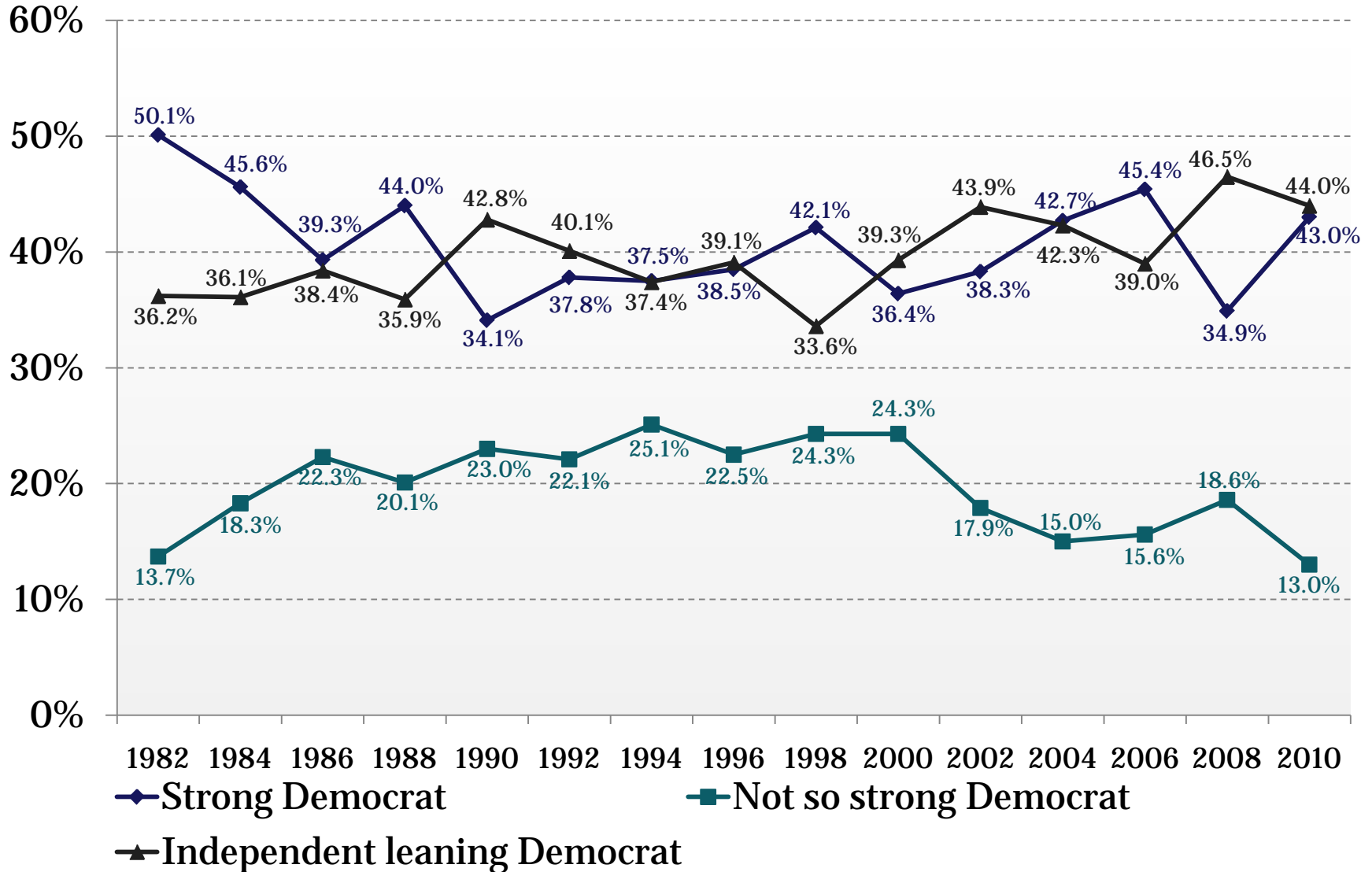
Source: Utah Colleges Exit Poll 1982-2010



Utah Republican ID Over Time



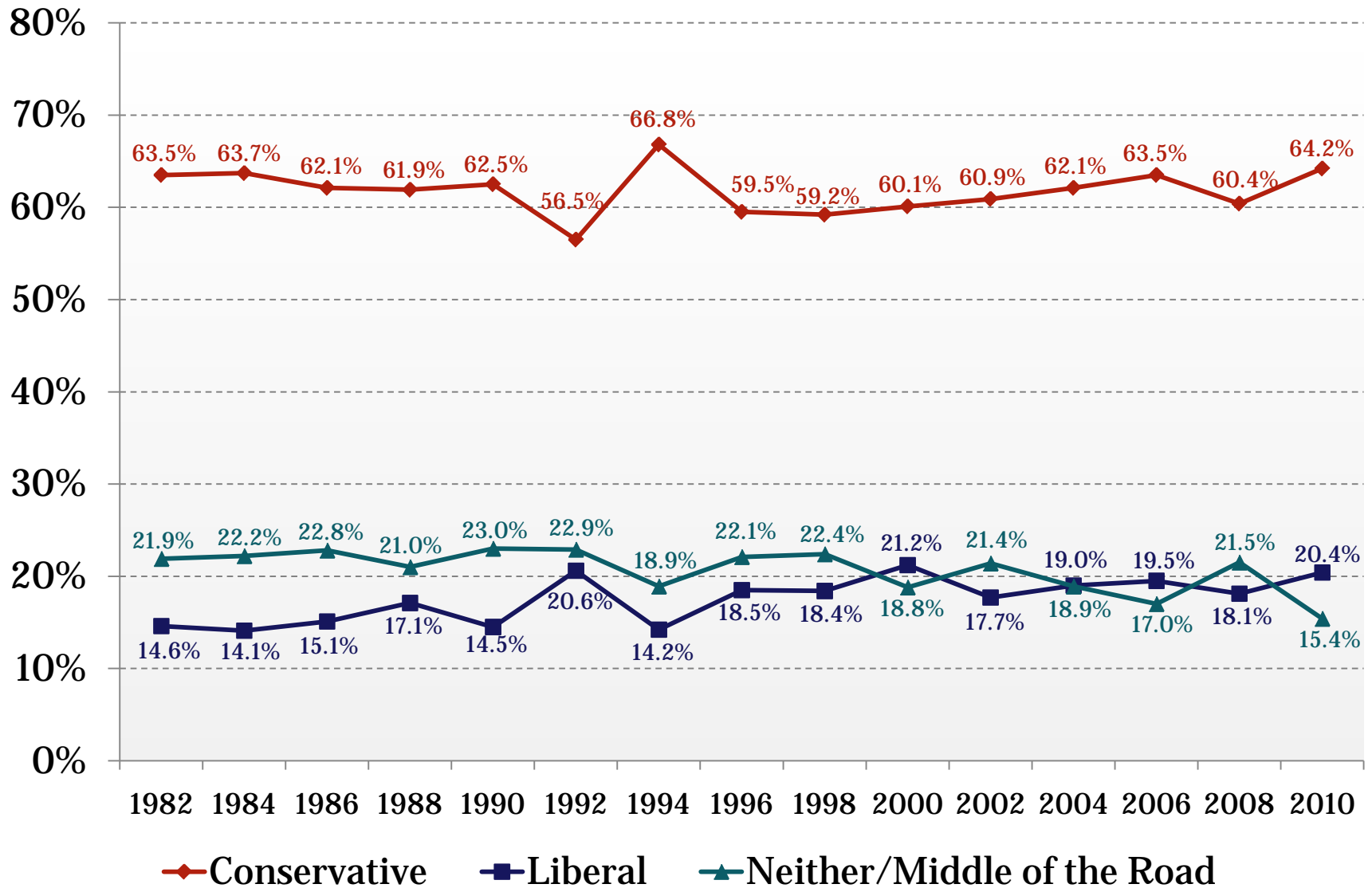
Utah Democratic ID Over Time



Utah Ideology Over Time



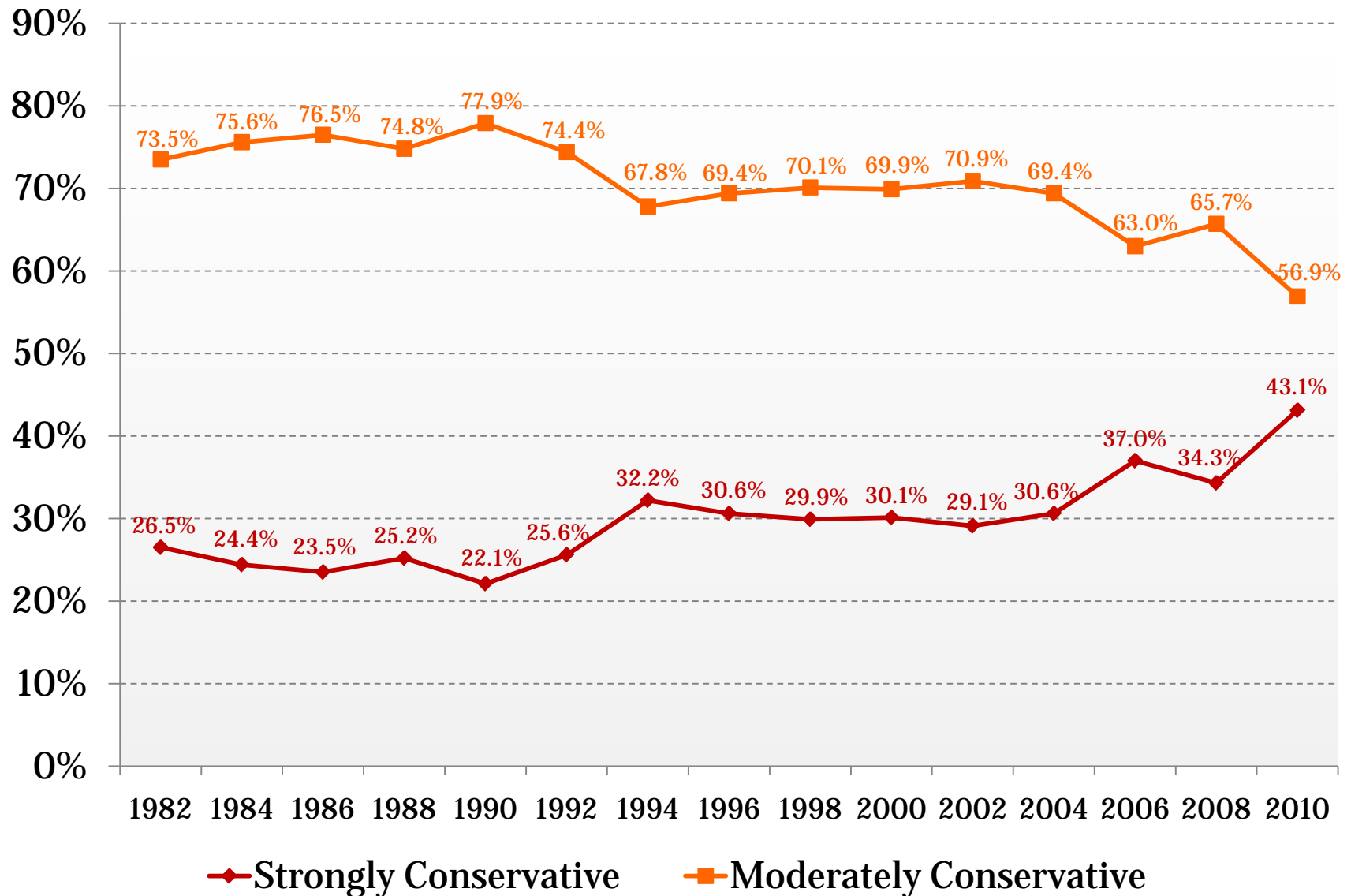
CENTER FOR THE STUDY OF
ELECTIONS AND DEMOCRACY
BRIGHAM YOUNG UNIVERSITY



Source: Utah Colleges Exit Poll 1982-2010

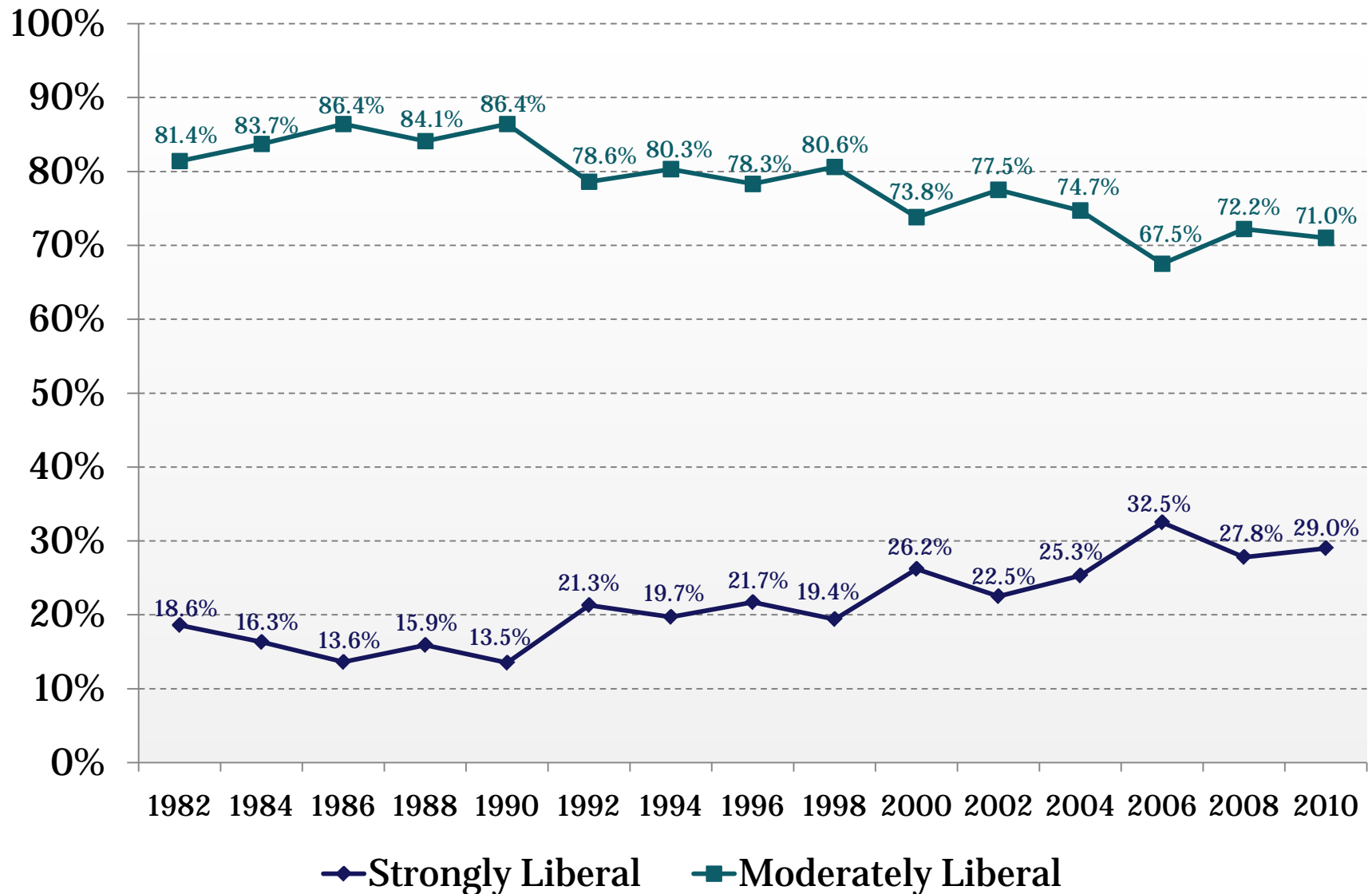


Utah Conservatism Over Time





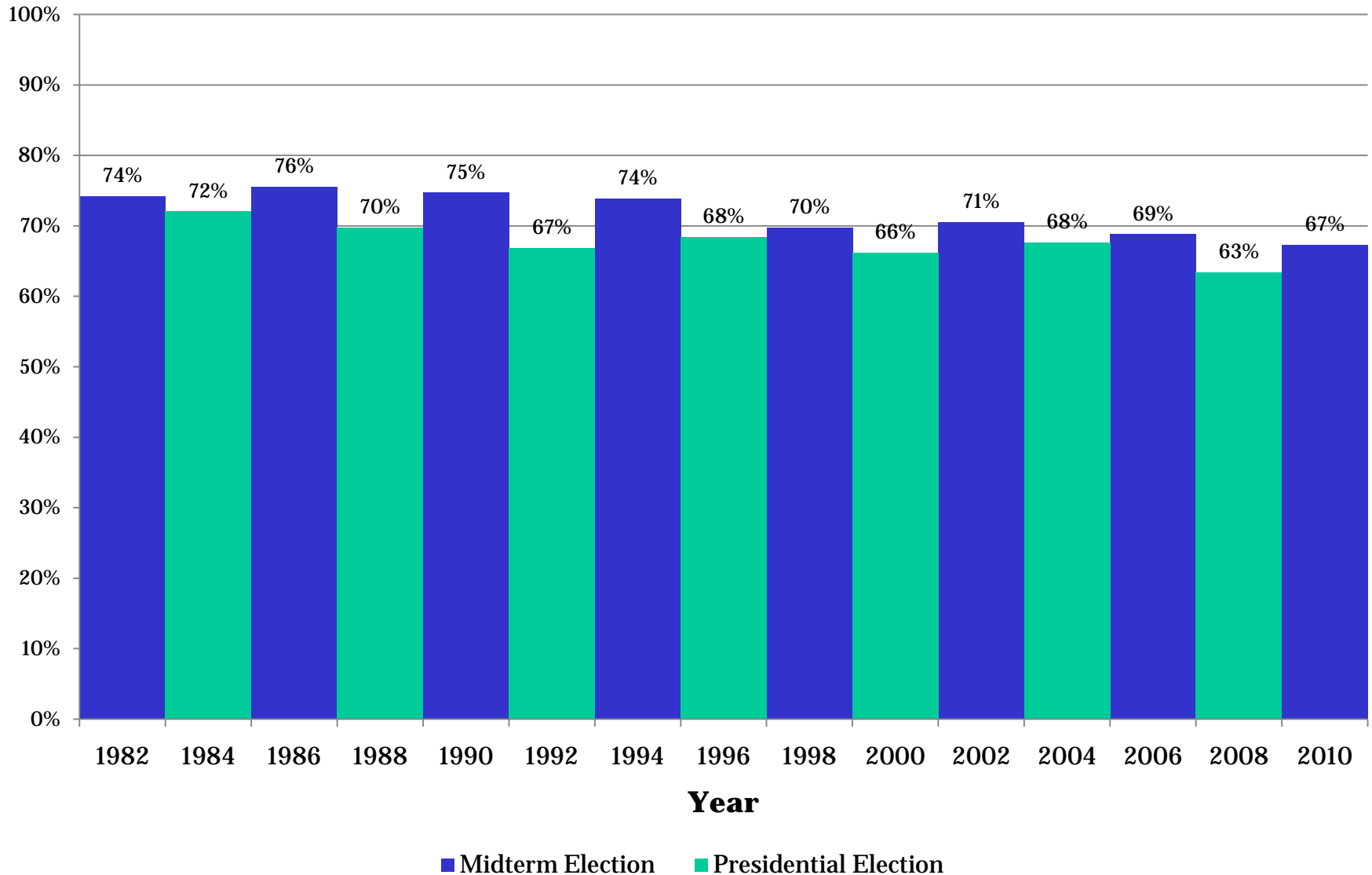
Utah Liberalism Over Time



Percent LDS in Utah Electorate



CENTER FOR THE STUDY OF
ELECTIONS AND DEMOCRACY
BRIGHAM YOUNG UNIVERSITY



Source: Utah Colleges Exit Poll 1982-2010



Party Identification by Electoral Jurisdiction

	Democrat	Independent	Republican
Statewide (2010)	27%	11%	62%
Utah House District 48 (2010)	27%	14%	59%
Utah House District 58 (2010)	10%	8%	82%
Utah House District 63 (2010)	20%	13%	67%
Provo City (2009)	13%	11%	76%
Salt Lake City (2007)	61%	13%	26%

Source: Utah Colleges Exit Poll 2007-2010



Party System: The Rules Matter



Types of Utah Voters



CENTER FOR THE STUDY OF
ELECTIONS AND DEMOCRACY
BRIGHAM YOUNG UNIVERSITY

	Delegates	Primary Voters	General Voters
Male	74%	46%	50%
Age ≥ 65	15%	32%	40%
“Strong” Republican	66%	47%	48%
“Strong” Conservative	62 %	44%	41%
Mormon	91%	89%	67%
Family Income (over \$100k)	67%	42%	46%
College graduate	74%	59%	24%
“Active supporter” of Tea Party	42%	28%	22%

Source: 2010 Utah Republican Delegate and Primary voter surveys and Utah Colleges Exit Poll 2007-2010



Right Direction/Wrong Track: Nation

	Republican Primary Voters (Statewide)	Democratic Primary Voters (2nd District)	Republican Delegates
Right Direction	4.6%	55.8%	2.1%
Wrong track	91.5%	31.9%	97.4%
Don't know	3.8%	12.3%	.5%

Sources: Utah Voter Polls and
Utah Republican Delegate Survey



Variables	1	2
Active Tea Party Supporter	1.60*** (0.23)	0.20 (0.16)
Strong Conservative	1.81*** (0.66)	0.04 (0.55)
Moderate Conservative	0.68 (0.65)	-0.35 (0.55)
Strong Republican	-1.10*** (0.27)	-0.32* (0.18)
Weak Republican	-1.00*** (0.33)	-0.14 (0.26)
# Times Delegate	-0.07 (0.06)	0.02 (0.05)
Male	0.06 (0.22)	0.13 (0.17)
2010 Family Income	0.05 (0.05)	0.01 (0.04)
Education	-0.21* (0.12)	0.01 (0.09)
Age	-0.04*** (0.01)	-0.01 (0.01)
Religious Activity	-0.22 (0.16)	0.12 (0.11)
White	-1.00 (0.66)	0.04 (0.35)
Constant	4.70*** (1.18)	-0.36 (0.84)
Observations	871	838

Standard errors in parentheses *** p<0.01, ** p<0.05, * p<0.1

•Model 1

•1= vote for Lee or Bridgewater

•0=vote for Bennett

•Model 2

•1=vote for Lee

•0=vote for Bridgewater

Findings

•Bennett voters are less conservative but are older, better educated, and stronger partisans

•Tea Party supporters did not support Senator Bennett

•But Tea Party support does not have a significant effect on the vote between Lee and Bridgewater

•The only predictor of the vote between Lee and Bridgewater is strong partisanship; Delegates who voted for Lee are less partisan.



Hypothetical Primary matchups

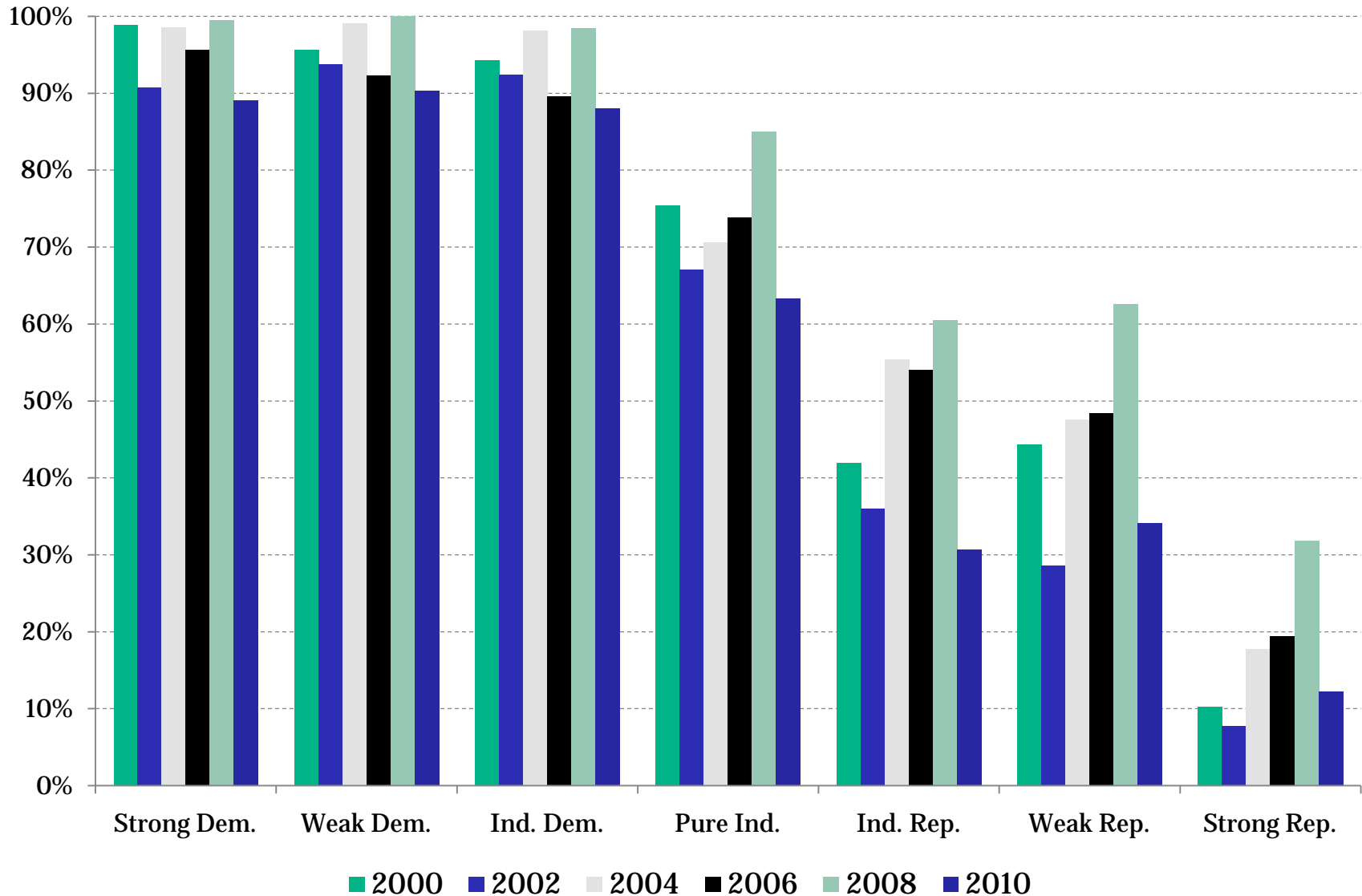
	N	%
Robert F. Bennett	193	40.7%
Tim Bridgewater	281	59.3%
Total	474	100%

	N	%
Robert F. Bennett	178	37.7%
Mike Lee	294	62.3%
Total	472	100%

Who votes for Jim Matheson?



CENTER FOR THE STUDY OF
ELECTIONS AND DEMOCRACY
BRIGHAM YOUNG UNIVERSITY



Source: Utah Colleges Exit Poll 2000-2010



Conclusion

- Some movement in party identification over time.
- Much more movement within the categories of partisanship.
- Utah electorate has become even more conservative ideologically over time.
- Delegates who are conservative and Tea Party supporters oust Senator Bennett.
 - Factional nature of one-party politics